

Hurst Clough

Hurst Clough is an extension of Great Wood, an important ancient woodland, and only separated from it by the main Manchester to Glossop rail line. The southern end of Hurst Clough is a narrow wooded valley with the stream running along the bottom. As you move north up the clough, it begins to get wider and open areas of grass begin to appear where you might find wildflowers and butterflies. There are footpaths through Hurst Clough making it easy to explore and benches where you can rest. If you want to explore further, the Trans Pennine National Trail also crosses the clough.

This trail has been produced as part of the 'Our Woodland' project. The project aims to involve residents of Hattersley in the care of their local woodland, Hurst Clough. Working with local groups, Tameside Countryside Service have planted over 2000 hedgerow trees, created a nature trail and produced entrance information boards.

Our thanks go to Logan, Lewis, Skye, Leigh, Declan and Alex, pupils from the Eco Team at Arundale Primary School. They have worked with the Rangers, visiting the woodland through the seasons and have helped create this nature trail.



A short walk around Hurst Clough Local Nature Reserve, Hattersley.

Inspired by pupils from Arundale Primary School Eco group.

Hurst Clough Nature Walk

This is a lovely nature walk through the woods and meadows of Hurst Clough.

"It is a good place to see lots of interesting wildlife and different sorts of trees and plants. You may spot bumble bees and birds nests, mushrooms and moths, butterflies and blossom"

"It is a good place for bird watching, picnics, playing and having fun and hiding."

"There are lots of paths to explore but they can be muddy so you need to wear boots or wellies especially after its been raining. Some paths are too narrow and bumpy for buggies"



C Butterfly and flower meadow

A good spot to watch butterflies feeding on the nectar of wildflowers

D Old Oak trees

"Oak leaves and acorns come off the oak tree. One tree is about 150 years old"

A The 'Fire' field

Rosebay willowherb

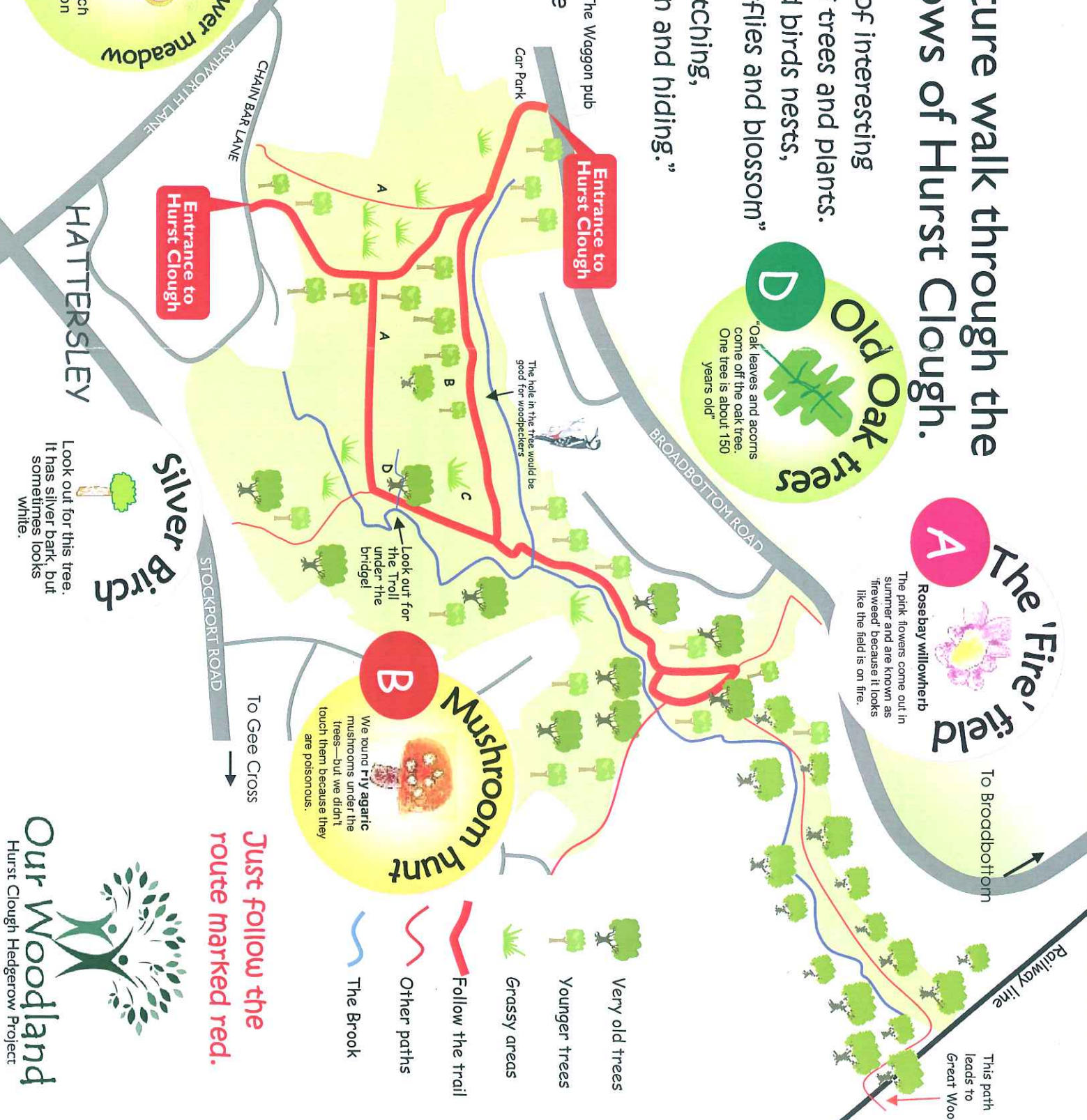
The pink flowers come out in summer and are known as 'fireweed' because it looks like the field is on fire.

B Mushroom hunt

We found Fly agaric mushrooms under the trees—but we didn't touch them because they are poisonous.

silver Birch

Look out for this tree. It has silver bark, but sometimes looks white.



Just follow the route marked red.

- Very old trees
- Younger trees
- Grassy areas
- Follow the trail
- Other paths
- The Brook