

Rochdale Way directions (Anti-Clockwise)

Updated in 2011 by Steve Baker of East Lancs LDWA¹



Contents

Introduction	2
Hollingworth Lake Visitors Centre – Walsden	3
Walsden – Ending Rake.....	5
Ending Rake – Ashworth Valley Road	7
Ashworth Road – Sycamore Avenue.....	9
Sycamore Avenue – Boarshaw Road	11
Boarshaw Road – Broad Lane	13
Broad Lane – Hollingworth Lake Visitors Centre	15

¹ Text revised slightly by Andrew Read (October 2019). All content © Steve Baker and [East Lancs LDWA](#) – reproduced with permission. All maps © [OpenStreetMap](#) contributors

Introduction

The route below has been produced to: (a) update the route around the Rochdale Way; and (b) hopefully get more walkers / non walkers to enjoy the scenery / views around the Rochdale Borough, whether for just for a few miles, or the full 45 miles.

It follows where possible the original route of the Rochdale Way “a circular walk” created by Richard Catlow, John Cole and Martin Riley, the last update of which was the second edition in 2004 / 2005. At the present time [2011], Rochdale Council have no plans to produce any further updates.

Because the route of the second edition could not take into account the passage of time, general wear and tear, and in some cases vandalism, this paper describes the route on an anti-clockwise basis, in some detail, based upon my findings around it. I started looking into the route back in March 2011 and finished, with the completion of the full walk on Sunday 2nd October 2011. This was to confirm the accuracy of the route at that point in time.

This paper will hopefully assist walkers to undertake the route with the knowledge that there are detailed directions which can be followed. However, I would strongly recommend the purchase of The Rochdale Way “a circular walk” for a small sum of approximately £2.65 from Hollingworth Lake visitors centre. This not only provides maps but includes sections on local and natural history that you pass along the way and gives advice when crossing the moorland sections.

The Rochdale Way is marked using “Way Markers” with a distinctive logo, which includes a yellow direction arrow, White Clogs and yellow wording “The Rochdale Way”.



Abbreviations used throughout this paper include:

RM	Rochdale Way
WM	Way Marker
PBW	Pennine Bridleway
PW	Pennine Way

If, after walking some or all of the way, anybody has any suggestions or comments with regard to this paper, please feel free to email East Lancs LDWA (secretary.eastlancs@ldwa.org.uk).

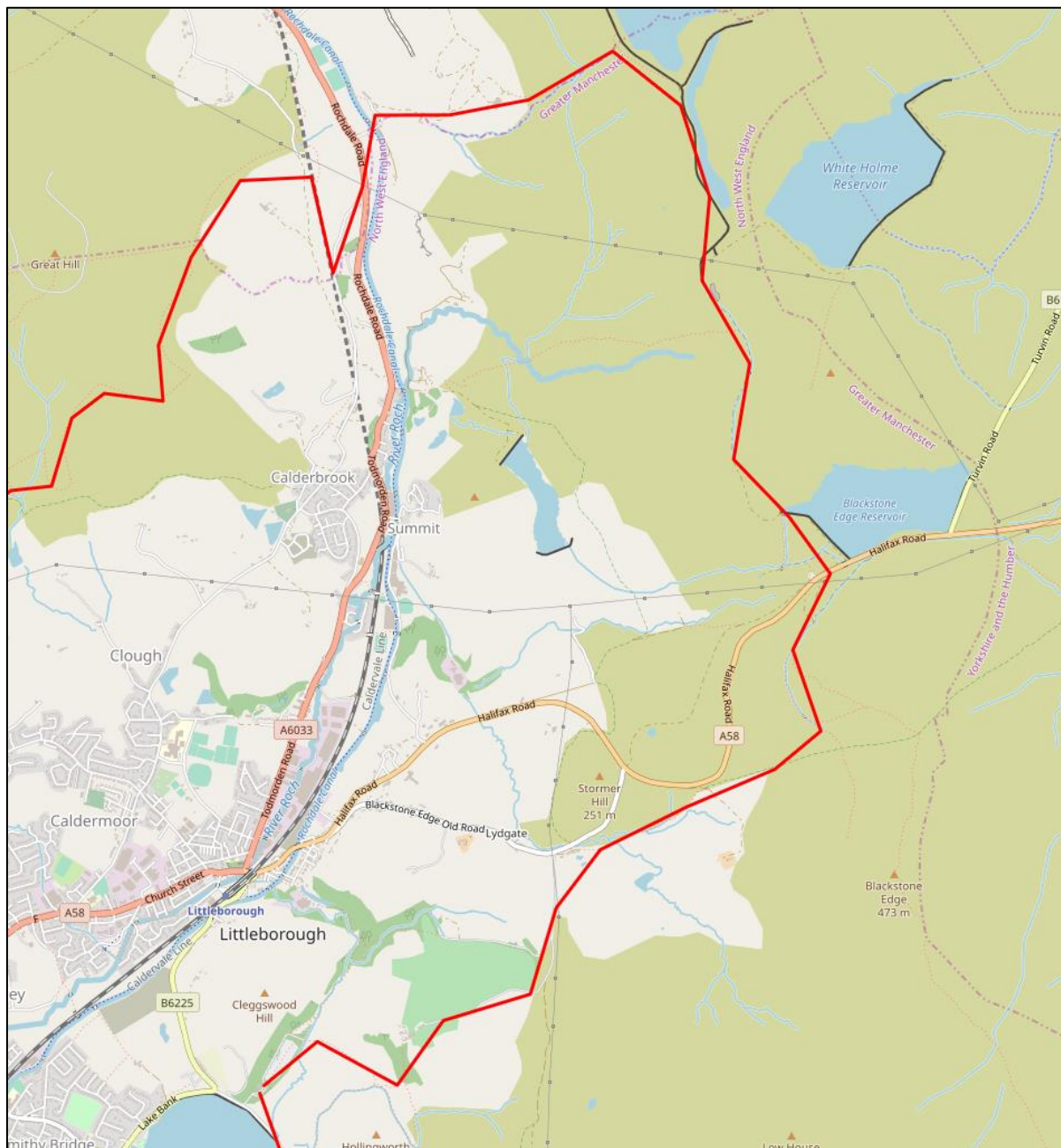
We cannot replace broken stiles, faded way markers, blocked routes but we will endeavour to pass problem areas onto Rochdale Council.

I hope you enjoy whatever part of the Rochdale Way you attempt. If you do, pass the message for others to enjoy.

Steve Baker

East Lancashire Long Distance Walkers Association

Hollingworth Lake Visitors Centre – Walsden



Pass Hollingworth Lake Visitors centre on the left, the way heads north. Follow the road around to the left, which soon becomes a track. Keep straight ahead passing car parking areas, entrance signs and the woods on the right. Soon the track bends around to the right going downhill, with a picnic area on the left. As the track levels out in front is a metal gate and a wooden gate, with WM. Go through the wooden gate, uphill on a good path to reach the farm buildings at Brearley Farm (currently being renovated). Follow the path around the buildings to the left, in a few yards a path junction is reached. Go left following the fence posts, with a stream on the right. Just before starting to go downhill, look to the right. Six yards away in the long grass / weeds is a WM on a post close to the ground. The path goes downhill to the right, at the bottom crossing a bridge and over a stile with WM. Straight on uphill to a metal gate and a “Whittaker Wood” sign on the left.

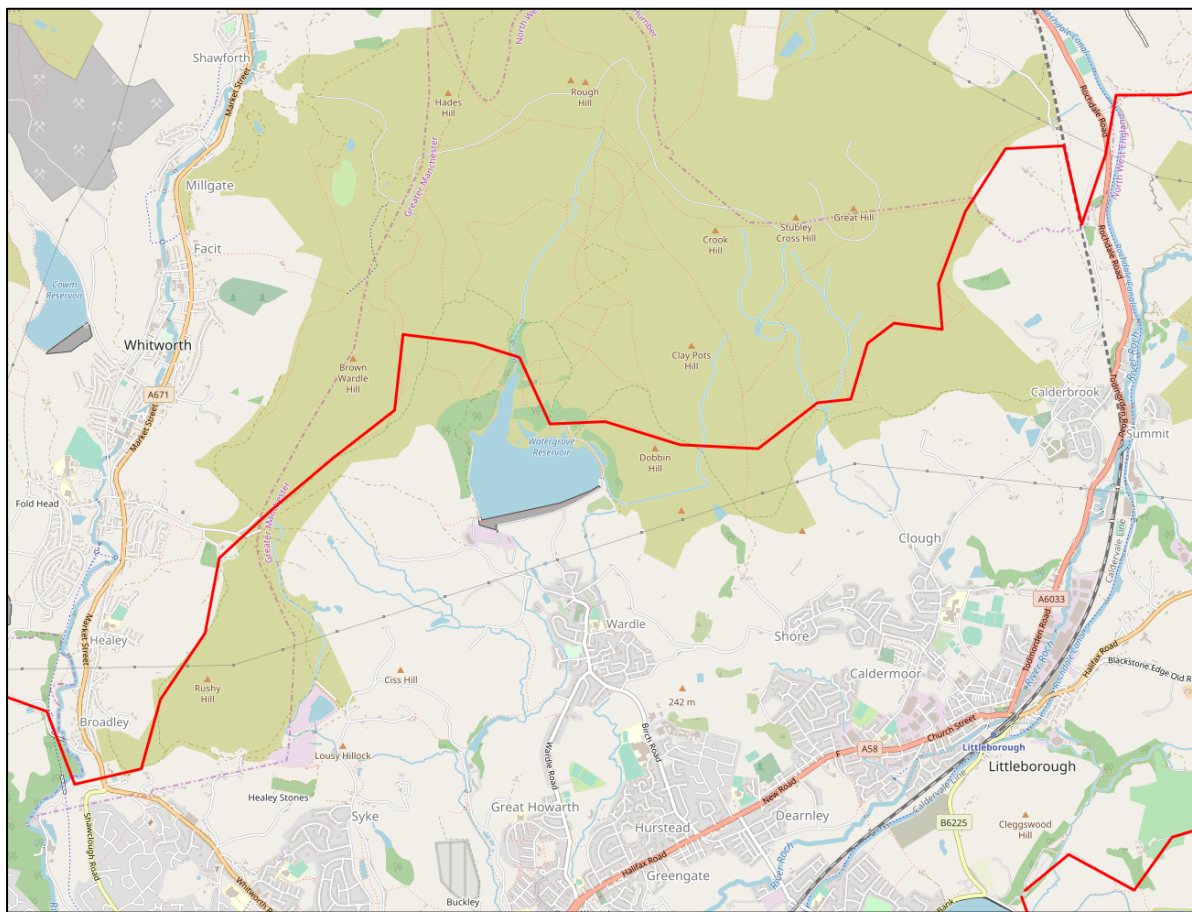
Through the gate and turn right going uphill to a metal gate. Through the gate soon to reach a wooden post with WM and houses. The way goes across a garden on stepping stones and bends around to the

right joining a tarmac road. Here is the hamlet of Whittaker and Whittaker Golf Club. Straight on following the road which bends left, after some time crossing a cattle grid with WM on the left. The road bends to the left, WM on a sign post on the right. Pass another WM on a post on the right. Just before reaching the road turn right, at a Public Footpath sign. The path passes some cottages. Just before the end of the cottages, on the left is a stone with "High Peak". Keep straight on, the path goes on for some time climbing uphill with a stone wall on the right. Just before meeting the main road and a Public Way sign on the left, cross over a farm road onto the Roman Road. Three quarters of the way up the hill cross a drainage channel, keep straight on uphill to reach the Aiggin Stone. With your back to the stone head downhill to the right. Eventually meeting the drainage channel on the left, cross over this in one of three places. Soon to see the White House Inn and a little later a house in front. At a fork turn left downhill, WM on a post on the right, to the main road. Cross the road (A56) and turn right up to the White House Inn.

Pass the White House Inn and turn left at the Pennine Way sign with WM. Go through a gap in a metal barrier, then through a metal gate onto a good path. Keep on this path which eventually reaches sign posts on both the left and right. Keep straight on to reach the start of the third reservoir, with a sign post on the right with WM, turn left downhill. The path bends to the left with a WM on a post on the right. Very soon reaching a metal gate with a gap on the left and a WM. The path goes downhill bending right at the bottom, to a wooden gate and a stile with WM. Over the stile and cross a field, heading slightly right to a stile with WM. Over the stile onto a good path to an automatic gate, with a gate on the right, go through. The path bends to the left downhill to reach another automatic gate, with a gate on the right. Follow the road downhill with crash barriers on both sides. The road bends sharp left, at Warland hamlet, follow it down to the bottom joining the Rochdale Canal. Cross over the bridge and turn right, WM on a telegraph post on the left. Follow the canal to bridge No 39 (Stone House), which has a WM on a post on the right. Turn left up the steps joining the Littleborough to Todmorden Road (A6033).

Cross the road, at the red brick house, a footpath sign points to Calderbrook. Go up this the path on the left, very soon to see a WM on a post on the left. Follow the narrow path with a stone wall on the left, stream on the right, uphill to a wooden gate with WM. Through the gate going uphill passing the first ventilation shaft on the right. Soon to reach another wooden gate with WM on the right. Keep straight on, the path bends to the right. Soon passing a post with WM on the right. Straight on up to the second ventilation shaft on the right. Pass this on a path which goes uphill between two pylons on top of the hill. Go through tall reeds bending left then right. Soon with the pylon in front and the third ventilation shaft on the right, look straight ahead. For a WM on a post pointing right, up the hill side, follow this up to the top of the hill. At the top join a tarmac path and a marker (not RW). Turn left towards a metal gate, just before it on the left, is a WM on a wooden block, pointing right over the moor. At the metal gate, WM on a post on the left, pointing across the moor.

Walsden – Ending Rake



Turn right and aim for the base of the pylon on the right. Keep to the left of it, uphill on a faint path through reeds towards the stone boulders at the top of the hill. After passing the pylon start to walk on a stone causeway path. The path runs parallel to a wall on the left. On reaching the boulders near the top of the hill, look left and take a faint path to the left, heading towards the stone wall. As the wall bends to the left keep straight on up and over the hillside. At the top, to the left a large pond and buildings can be seen in the distance below. Head downhill following them to the left, soon to meet a water channel on the right. Follow this downhill, do not cross it, the path bends to the right and then to the left, with a small hill in front, to a metal gate with WM.

With your back to the gate go straight on, the path goes through tall reeds and bends around to the right. Soon coming to the stones of a ruined farm. Pass the stones and turn right uphill following a stone wall on the left-hand side into the valley. Which has stones on both sides up in the undergrowth. At the top of the hill go through a gap in the wall on the right, uphill to join a wide path. Turn left going downhill crossing an area of shale to reach a distinctive terrace. Follow this across the hill side of Ringing Pots Hill downhill with the valley on the right. At a fork turn right. Very soon after at another fork keep right and cross a stone embankment on the left. The path bends to the right uphill. At the top straight on to reach a stone stile in the wall and a WM on a post on the right.

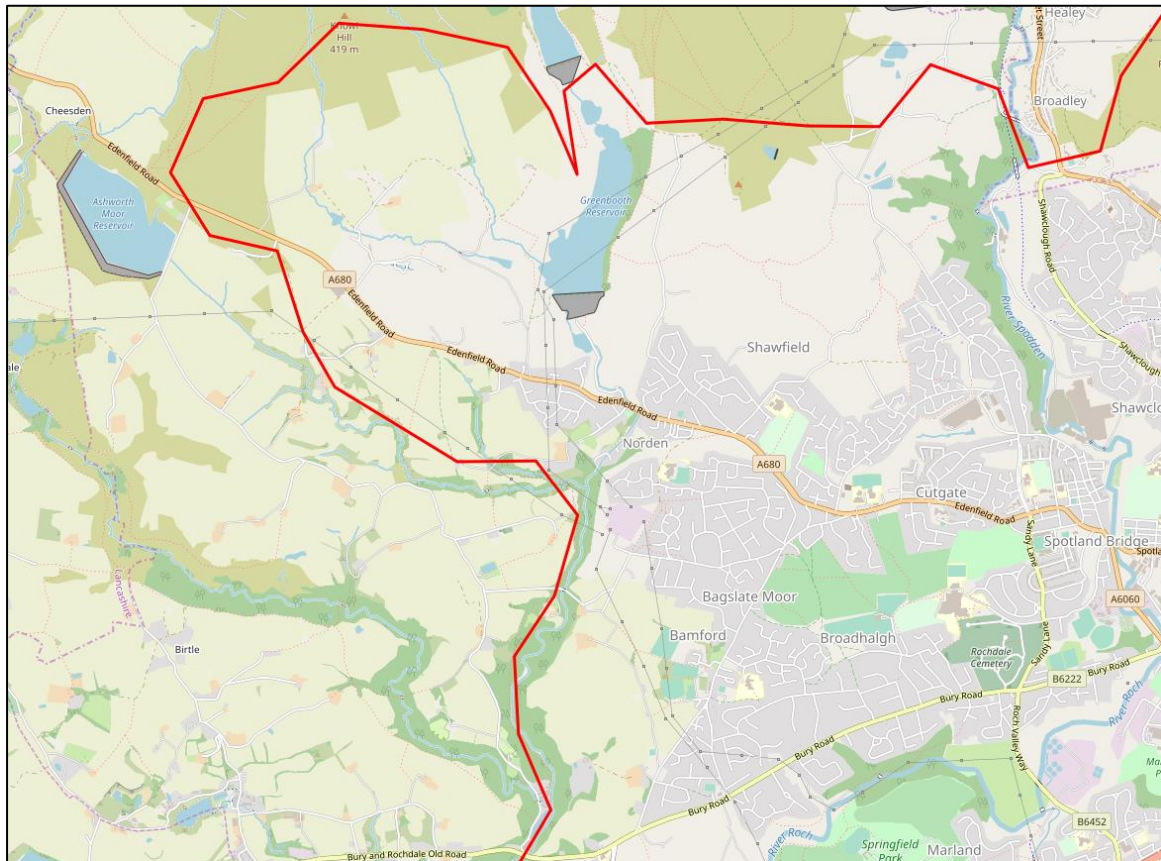
Over the stile uphill passing a ruin building on the right. Over the hill then downhill on a faint path. At the bottom cross over a small concrete embankment, with a WM on a post on the right. Turn left passing three man hole covers. The path bends to the right, turn left down to a stone post and stone wall, joining the Pennine Bridleway. Turn right for 25 yards then turn right to a WM on a wooden fence. Turn left here through tall reeds, then turn right uphill. Follow the stone wall uphill crossing

from left to right to avoid the reeds. At the top of the hill at a stone wall, go over the stile in the wall. Then straight on up the hill in front, at the top meeting a kern. To the right a small slag heap can be seen, to the left a substantial wall. Head downhill to the slag heap joining the Pennine Bridleway, turn right. Very soon meeting a metal gate. Go through the gate and over a new ladder stile on the left. Turn right uphill on an overgrown track heading slightly right, which then bends around to the left. Soon Watergrove Reservoir can be seen in front. Head downhill towards the trees to the right of the reservoir. When the tree and fence line come closer, turn left to a metal gate. Go through to meet a path with a signpost and WM. Turn right to the Visitors Centre.

From the Visitors Centre go through a gap in a metal barrier, WM on a post on the right. At a metal gate go through the wooden gate on the right. Just before reaching the next metal gate with a sign post on the right, look left for a sign "Steward Barn". Turn left through the metal gate. At the next metal gate with "Higher Slack Brook Nature Reserve" go through and after 27 yards turn right, WM on a post on the right. Onto steps which go downhill to cross a stream on a wooden bridge. Straight on uphill to a stile. Over the stile and turn right onto a stone path uphill, across the moor. At a fork take the path straight on to reach a wall and a PW marker on a post. Turn left and go through stone gate posts, then soon after through another. Pass two ruin farm buildings one on the right the other on the left. Here the path goes downhill then uphill. At the top, turn right off the main path and follow the wall on the right steeply uphill on a good track, to a stile. Over the stile and turn left onto a narrow path with a water channel on the right. Keep straight on, the path goes on for some time alongside Watergrove Reservoir on the left. At the end of the reservoir the path comes onto a large open area. On the left is a grey metal gate, on the right a fork. Take the path to the left, which eventually comes to a post and a large stone. The post as PBW markings and a WM.

Keep straight on, just before reaching Lobden Golf Club in front, there is a gap in the embankment which goes downhill. Turn left here to meet a sign post with WM. Straight on crossing two paths, just before reaching a fork look left, for a WM on a telegraph post. On reaching the fork straight on (to the right) downhill to a disused reservoir. At the reservoir turn right, very soon passing a WM on a post on the left. Keep straight on, on a wide path which goes up then downhill, eventually meeting a concrete path with a sign post on the left. Straight on, sign post on the left, do not take the path to the left uphill. Pass houses and farms on the right. eventually passing a WM on a post on the left and soon after a wooden gate. Through the gate downhill, passing a WM on the right under a stone archway. Down Ending Rake onto the Rochdale to Bacup Road.

Ending Rake – Ashworth Valley Road



Cross the road at Ending Rake and turn right. Soon to meet Station Road on the left. Turn left and after 100 yards look for a gap in the wall on the left. Go down stone steps, WM on a post on both the left and right. Follow the green metal fence downhill. Cross the stream uphill to reach the viaduct, a tarmac road and a WM on a post on the right. Turn left, then immediately right up stone steps, WM on a post on the right. At the top turn right crossing over the viaduct. Soon to meet a metal gate with a bridge above. Straight on passing wooden carvings and a wooden bench on the left. Turn left with a WM on a post on the right. Up the steps WM on a post in front. Turn right through a gap in the wall, then immediately left to a metal barrier. Through this turning right and follow a cobbled road uphill, passing a pond on the left.

Keep straight on uphill for some time. At the hamlet of Prickshaw look to the left for a stone with "Rochdale Civic Society Award 1993". Pass this on a path which soon goes downhill, bending to the left, then to the right uphill. Eventually reaching a metal cattle grid with a wooden gate. WM on a post on the right. Go over straight on passing a WM on a post on the left. Continue uphill to meet a rough path (Rooley Moor Road) with a sign post. Turn right uphill, soon turning left onto a stony path. Straight on, the path eventually goes downhill, to meet a path with WM on the right, turn right. Soon passing a gate with a WM on a post on the left and shortly afterwards a metal gate with a wooden stile. Over the stile straight on downhill to cross Naden Middle Reservoir. At the end turn left and go through a wooden gate, WM on a post on the right. Go straight on to a path which bends left downhill following the reservoir around. Do not take the path which goes steeply uphill.

Follow this path along the valley side for a quarter of a mile. At the end of the first reservoir turn right passing a black burnt out sign and up a slight ramp. Continue on this path for some time which goes around the reservoir, eventually coming to a stone gate post with two sycamore trees on the right.

Turn right towards the second tree which has a WM on a post in front. Turn right to a metal gate, go through and follow the path uphill, with a barbed wire fence on the right. Pass a blue and red marker post on the left to a grey metal gate. Go through, WM on a post on the right. Take the faint path which bends left uphill, then right passing a blue and red marker on the right and a stone wall on the left. Straight on, the path tracks the wall on the left. Pass another blue and red marker on the right, then onto a stile. Over the stile passing rocks on the left-hand side uphill. Pass another blue and red marker on the left onto a narrow path. Pass a WM on a post on the right to reach a wall with steps built in, over the wall and turn left.

Knowl Hill can now be clearly seen in front. Head across the moor for one of two distinct paths up to the top. From the top head downhill towards Ashworth Reservoir in the distance, on one of a number of paths. Keep straight on until the house in the trees, bottom left of the reservoir, becomes nearer. At a defined fork go right. Soon the main road can be seen, at a defined fork go right to meet the Rochdale to Edenfield Road (A680) near the Owld Betts Pub. Cross the road and turn left alongside the wall of the reservoir. Very soon a faint path can be seen, follow this crossing Ashworth Road. Keep straight on passing houses on the right, soon to reach Public Footpath signs. Take the path uphill to the right. At the top go through a metal gate with WM on a post on the right. At the bottom join a path, in front is a WM on a post. Go to the right of the post into a field. Turn left towards a house following the wooden fence around the house downhill. At the end of the house, look to the bottom right hand corner of the field and head for a telegraph post in the long grass. At the telegraph post go over a stile with WM and head towards a Public Footpath sign. Here there is an open gate and a stile, use either and go into the field. Head towards a telegraph pole, then downhill towards a house with two brown garage doors. At the bottom go through a gap in a wooden fence with WM.

Turn right passing Ashworth Brook Farm on the left. The path goes slightly downhill bending left to an old metal gate. Go through and follow the path around to the right, then follow the line of the bushes on the left. Soon with a metal gate on the right and a WM in front on a post near the ground, turn left over a stile. Keep straight on, the path drops down to the right to a stile. Over the stile, and turn right to another stile with WM. Over this stile and follow the path towards the trees on the right uphill. At the top follow the tree line on the right. Keep straight on. Do not take the path downhill to the right. The path drops downhill to a metal gate with a gap on the right and a WM on a post. Go through and follow the tree line on the right coming into a large field. To the right is a stone post with WM which points left. Do not go to it. Head downhill to the left-hand side of the field to a stile. Over the stile soon to reach a stile at Lee Holme Farm. Over the stile following a grey metal fence around to the right. Go through a metal gate on the right and turn left onto a path. Through a metal gate with a small gate on the right. Straight on to reach another metal gate with a small gate on the right. At the tarmac road turn left passing Marcroft Tea Rooms on the left.

Keep straight on to meet houses. On the right at number 8, with a brown plastic door and windows, turn right then immediately left onto a path which goes steeply downhill to the river. Cross the river over a new wooden bridge and turn left. Follow the path uphill to the end, coming onto School Lane. Turn left then immediately right through metal gates, with cottages on the right. Follow the path to the left of the cottages downhill, which bends around to the right reaching a wooden gate. To the left is a small wooden gate with WM (not RW) on a post. Go through, straight on passing through a gap in the fence. Very soon to reach a Public Footpath sign. Go left downhill into Gelder Wood with the river on the left. Keep straight on this path for some time. Eventually meeting a gap in the path with a WM on the right. Go through into Gelder Wood caravan site, at the end turn left onto a road. Go uphill to meet Bury and Rochdale Old Road.

Ashworth Road – Sycamore Avenue



Cross the Bury and Rochdale Old Road. The path goes between two metal barriers, downhill into the woods. Down wooden steps and at the bottom turns left, uphill to the main road. Cross the road and turn right. Take the next left turn onto Mine Street. As the path splits, keep straight on, do not go left uphill. Just before a house gate on the right take the narrow path in front going uphill. Under the road bridge, soon to cross a foot bridge into Queens Park. Keep to the left and follow the path around to the lake. At the lake follow the path around to the left and then straight on passing a BMX track on the left. Soon the path comes to a metal gate.

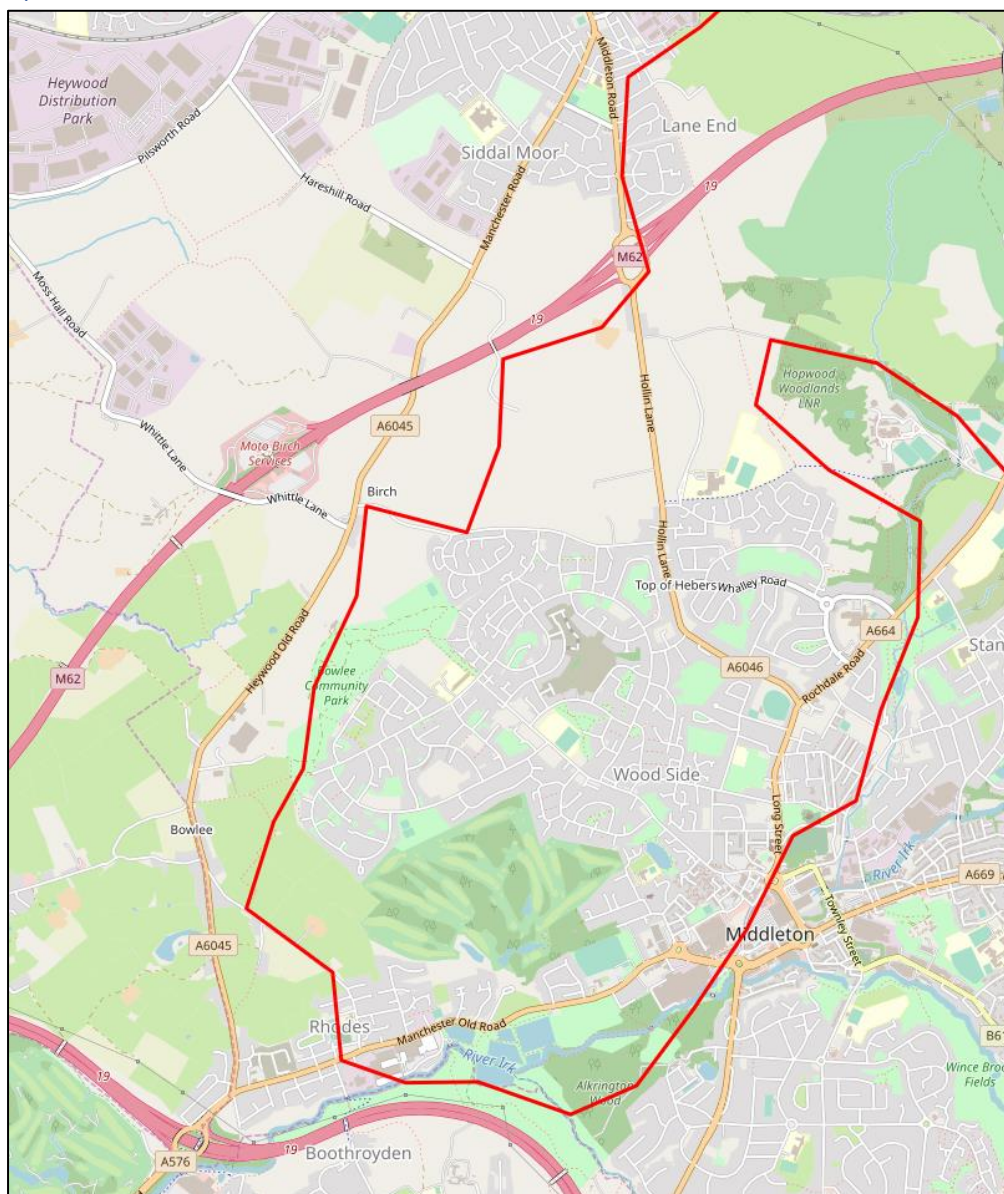
Through the gate and turn left underneath a “Max Height” barrier. Very soon pass through a gap in a metal barrier, straight on following a stream, which soon becomes a river. At a fork in the path turn right, with two wooden posts on the left. Look immediately right for a faint narrow path on the right, which goes through the large grass / weeds coming out into a field. Turn left and follow the field around uphill, which then drops downhill to meet a tarmac path (Crimble Lane), turn right.

Soon in front a house with a white PVC conservatory can be seen. 25 yards before reaching this look to the left, where the bushes have thinned out. Turn left and pick out a faint path which bends right through the large grass / weeds to a stile. Over the stile into a field, head straight on towards a pylon. At the pylon straight on downhill towards the trees. Pick out a faint path which goes to the right of the trees, then drops downhill to a wooden bridge. Cross over and turn right up stone steps, WM on a post on the right. On joining the Rochdale to Heywood Road (A58) turn left towards Rochdale. On reaching the houses on the left, at number 207 cross the road.

Pass the old gate house on the left straight on, at the end of the path at a T junction turn right. After some time, the path bends left going downhill, then around to the right, passing three cottages at the hamlet of France Hill. In front is a locked metal gate, with gaps on both sides to get around. Straight on to a path which has fences on both sides eventually coming to a T junction, turn left. Soon take the second path on the right, with the Castle Hawk Golf Club sign. Very soon passing the golf driving range and pro shop signs on the left. Just after look for a "Heys Cottage" sign on a tree on the left. At the gates of Heys Cottage, go left onto a narrow tree lined path. Follow the path around with a golf green on the left and the cottage on the right. To meet a wooden hut and golf tee No 10. Pass in front of the hut straight on towards the trees. Pass on the right a golf green and very soon after a marker post. (not RW). Straight on through the trees, going downhill to reach a post with five markers (not RW). Soon after to meet another post with five markers (not RW) and a golf green in front. Just before reaching it, turn left crossing a wooden bridge over open drains.

Straight on, slightly right and take the path to the right uphill. At the top turn right to a metal gate and metal barrier posts. Go through and turn immediately left, very soon to meet and cross the railway line. Straight on through a wooden fence. Keep on this path which eventually comes out onto a road. Straight on, do not follow the road to the right. On reaching Gregge Street turn left onto a path. At the end of the path turn right onto Sycamore Avenue. At the end joining Middleton Road (A6064).

Sycamore Avenue – Boarshaw Road



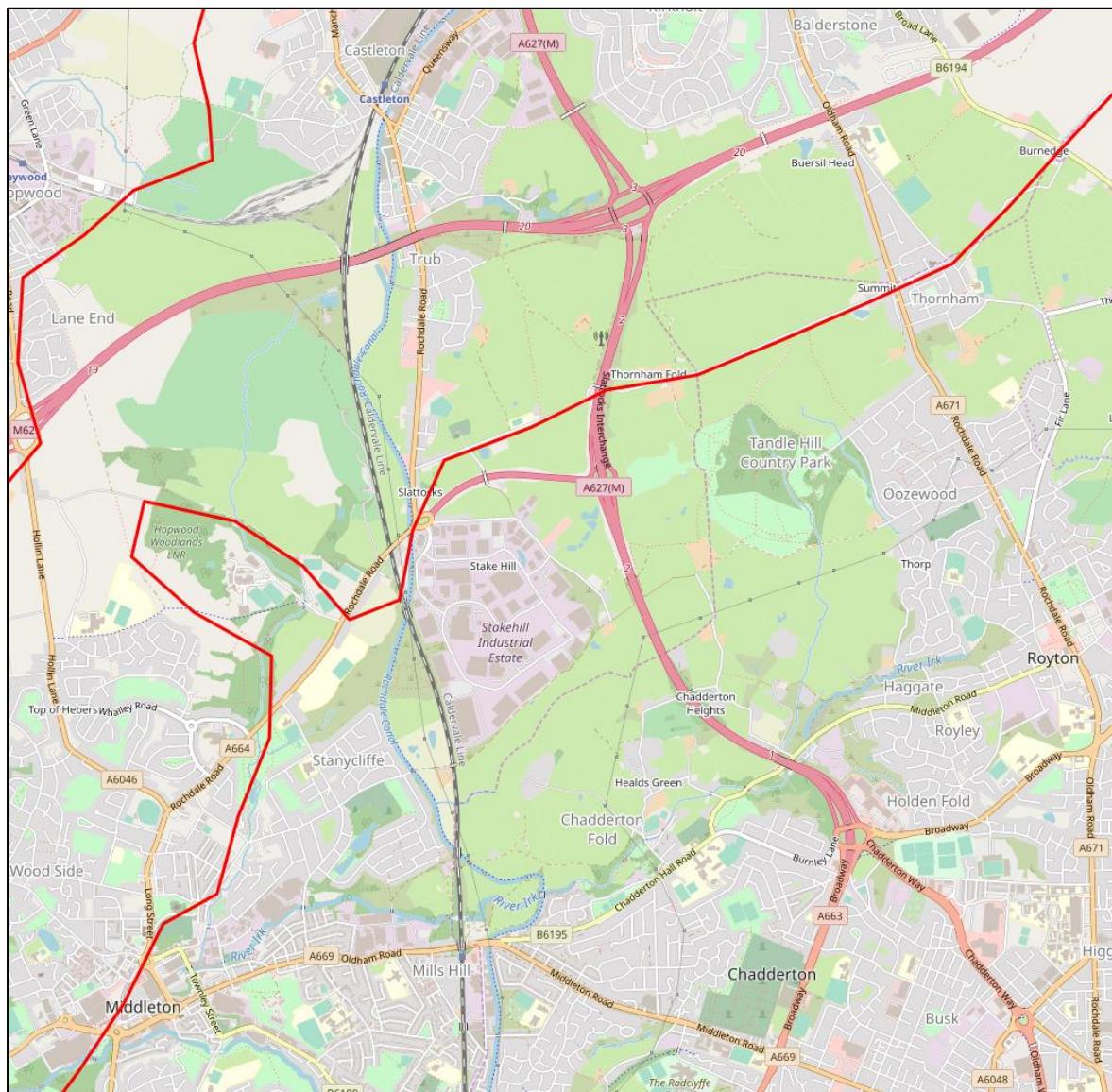
Cross the road and turn left. Straight on crossing over the motorway. At the end of the houses on the right, turn right following the path to a farm building (Oak Ridge Farm). As the path bends left keep straight on (slightly right) to a fence, with a stile and WM in the trees. Over the stile and a series of others, following the line of the fence and motorway on the right. Eventually the fence turns left, slightly uphill to a couple of houses and a stile. Over the stile and turn left onto a tarmac path.

Straight on to reach a house on the right, coming into the farm yard. Look slightly right for a Public Foot Path sign, a fence and a stile with WM. Over the stile and turn right following the fence line on the right to a metal gate. Which has a stile and WM (not RW) on a post on the left. Over the stile and cross the field following the fence / hedge line to the bottom left hand corner. Turn left at a post with three WM's, to a metal gate and a stile with WM on the right. Over the stile straight on following the tree line on the left. Over another stile and bend around to the left to meet a fence. Which has a metal gate on the left and a stile, with WM on the right. Over the stile and turn right to another stile with WM. Over this onto Langley Lane.

Turn right and follow Manchester Road (A6045) downhill to the bottom. At the T junction, White Hart Pub in front, turn left. At the end of the houses look for a carved stone (Bowlee Sculpture trail) on the left. Turn left here and follow the fence alongside the football fields. At the end turn right onto a tarmac path, which passes the changing rooms (red brick building) coming onto a large tarmac area. Keep straight on bending slightly to the left-hand side. Eventually meeting the metal fence of the golf driving range. Follow the fence to the left and then around to the right. As you get close enough to see the individual driving booths, look left into the grass / bushes for a WM on a stile (hard to see). Over the stile heading uphill, slightly to the right. Near the top of the hill go through or over a metal gate into a field. At the top of the hill look in front for a building made out of grey blocks. 100 yards to the left of this, is a house, go downhill towards this. At the bottom go over a stile with WM and turn left onto Boardman Lane which eventually goes downhill to join the Middleton to Manchester Road (A576). Cross the road turning right and take the second left turn, onto Boothroyden Road.

At the end of the road turn left onto a narrow path next to the river. Follow the path which tracks the river, eventually going between two gate posts and coming out at a T junction. On the left is a bridge with a metal gate. Turn right with the river on the left, passing a sign "Danger Water Do Not Enter No Swimming" and a pond. Straight on through a metal gate. At the end of the pond on the left, meet a weir, a metal gate and a WM on a post near the ground. Straight on the path eventually bends to the left coming to a fork, WM on a post on the left. Go left slightly uphill to reach a metal gate. Go around the gate with Wood Cottage on the right, not through the gap in the fence on the left. Straight on to the end of the cottage with a WM on a post on the right. Follow the path which goes uphill and then downhill. Soon on the right meeting a post with markers (not RW), turn left passing a WM on the left. Keep going downhill. Soon on the right the woodlands open onto a field, with Alkington Hall at the top of the hill. Practically opposite, on the left is a stone bridge (Lever Bridge) with WM. Straight on past the bridge, through a gap in the fence soon to reach a fork. Turn left, WM on a stump on the left, onto a narrow path. Which comes to a wooden bridge. Cross the bridge straight on to reach Manchester New Road (A664), opposite Middleton Bus Station. Cross the road and go through Middleton Centre to Long Street and the Boars Head Pub. Cross the road turning left and take the next right turn onto New Lane. Up the hill passing the Ring O'Bells pub on the left. Then downhill straight on, despite the road bending to the left, to Boarshaw Road and turn left.

Boarshaw Road – Broad Lane



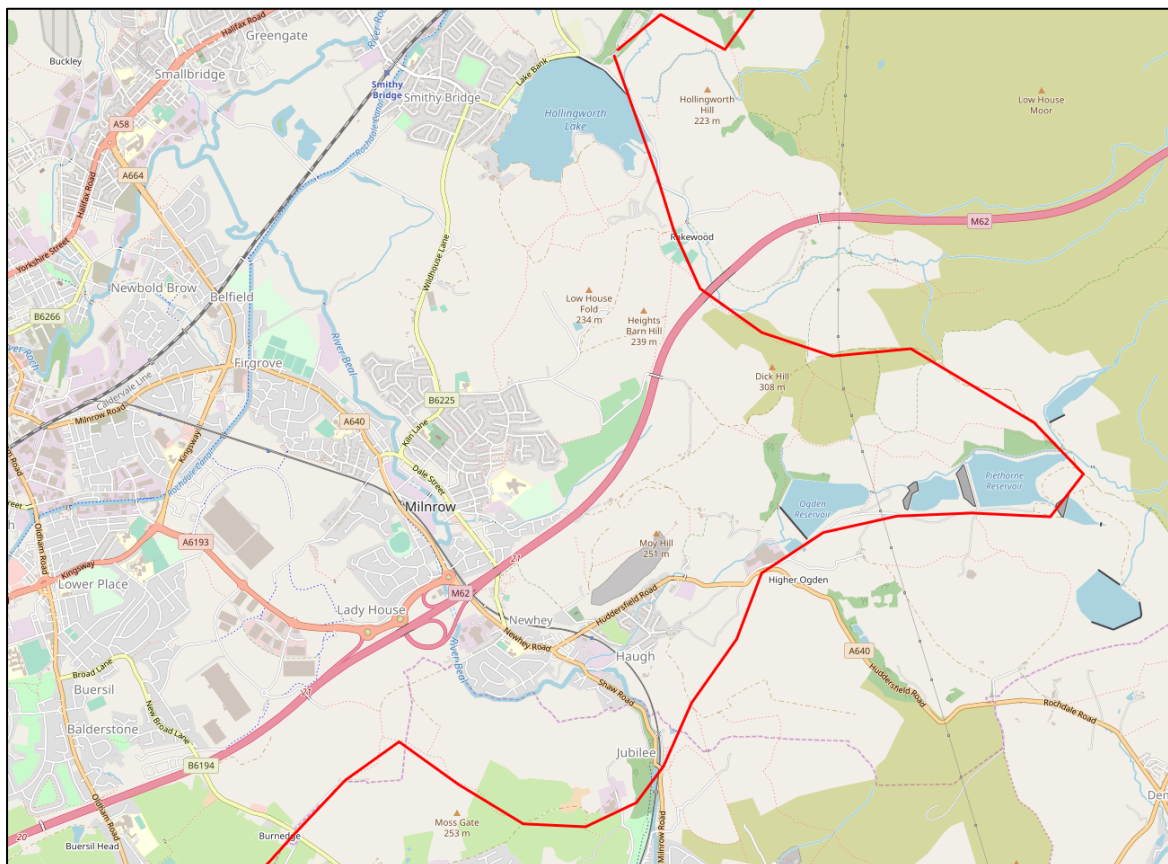
Straight on to a mini roundabout. At the roundabout go straight across onto a path in the trees, near a litter bin and the remains of an information board. The path follows the fence on the left alongside some new houses. Where the path crosses the river turn left, passing close to a house. Very soon to meet a pond on the right, with a sculpture of a fish and a brown egg on the left. Follow the path through a metal gate into the woods. Pass an Acorn carving (No 5) on the right and carving (No 4) on the left. Just after the path bends to the left going slightly uphill, passing carving (No 1) on the left. At the top of the hill meeting an ornate metal entrance, a metal gate and a bus stop.

Cross the A664 road and turn right towards Slattocks. After 45 yards at a Public Footpath sign, turn left through a metal gate with a WM on a post on the right. Follow the path downhill into the woods to the river and cross over the bridge. WM straight in front on a stump. Turn left going uphill. Near the top of the hill slightly to the right, go through a gap in the fence and follow a narrow path. The path goes up hill alongside a field on the left. At the top of the hill turn left onto a tarmac / stony path. Very soon passing a pond and slightly after Woodside Farm on the right. Carry on uphill and take the path to the right, which eventually meets a large metal gate. Just before the gate turn right through a

metal barrier. The path follows the line of a grey metal fence on the left. Very soon the metal fence turns left and two paths appear. Take the one straight on passing through a metal barrier.

The path turns right downhill into the woods, eventually meeting a wooden gate on the left. Go through and turn right onto a defined path, with a red brick wall on the right. Soon the path bends to the right, with a metal gate and a stile with WM on the left. Over the stile and follow the path alongside the football pitches. On reaching a bench, take the path to the left (behind it) into the woods, up steps to the main road. Cross the A664 road and turn right to a Bus Stop and a Public Footpath sign. Turn left down a slope onto a road. Turn left then bend right, the road quickly becomes a country lane. Follow the lane which bends left under a red brick bridge and then right to the Rochdale Canal. Cross over to the opposite bank and follow the path to the Lock Keepers Cottage. Cross the road here, turning left and take the next right turn onto Thornham Lane. Keep straight on up the lane which eventually meets a main road, with the Summit Pub on the right. Cross Oldham Road (A671) and continue on Thorham Lane to the end, turning right onto Castleton Road. Cross the road passing Gravehole Chapel on the left and take the next left turn onto Pit Lane. Keep straight on passing a caravan storage area on the left to meet Broad Lane (B6194). Turn left down the road, then next right crossing over the road onto a lane.

Broad Lane – Hollingworth Lake Visitors Centre



Up the lane passing Moorgate Cottage, Burnedge Farm and an old broken-down building on the left. The path goes downhill then left slightly uphill, to reach Iron Gates on the left. Go through the gates and turn immediately right onto a narrow path. Which goes uphill over a series of stiles, some with WM's some without. Pass alongside a dry-stone wall on the right and continue uphill to reach a metal fence with WM. The path now has walls on both sides. On reaching an old metal gate go through and very soon pass what remains of a metal gate. In the field, straight on uphill. At the top go through an opening in the wall heading slightly right. Soon to meet a small wooden gate and a footpath sign (Oldham Way) on the right. Straight on, passing a trig point on the right, do not go to it. Go through an opening in the wall, downhill. The path bends to the left passing a small pond. At the bottom meeting a metal gate, and a stile with WM on the right. Over the stile and turn left onto Moss Gate Road, soon to pass Whitfield Hall on the left and other houses.

The path bends to the right, with a footpath sign on the right. Turn right over a stile with WM, onto a narrow path which has a wall on the right and a fence on the left to the end. Where a WM sign sends you left. Follow the path to a tarmac road. Slightly opposite is a wooden gate and a grey metal gate behind it. If open go through, otherwise climb over. Follow the wall on the left to a stile. Over the stile straight on downhill, through wooden barrier posts. Straight on to a wooden gate, go through then through a gap in the fence, steeply downhill to a wooden gate. Through the gate down steps onto a cobbled road with a Public Footpath sign. Turn right then immediately left into Dun Wood, onto a good path which goes downhill to the left. Keep straight on for some time following a green metal fence on the right, which follows the route of the old railway line. Eventually the path ends at a green metal gate with a WM on a post on the left. Through the gate to the Milnrow to Shaw Road (A663). Across the road in front is a WM on a post. Cross the road and turn left, just past the bus stop on the right, turn right to a metal gate. Go through the small gate on the right crossing over the old railway

line to another gate, with a small gate on the right. Go through, very soon passing a WM on a post on the right. Turn left uphill onto a cobbled path which soon ends. Go up three small steps on the right, turning right onto a narrow faint path. Which goes through bushes and weeds uphill, following the fence line on the right. At the top reaching Top o'th' Hill Farm, at a stile with WM. Over the stile and cross the farm to Cherry Tree cottage. Go to the left of the cottage, through an open gap into a field.

Follow the tractor tracks uphill to meet a wall on the left, follow this till it ends. Here go through a gap in the wall with WM. Head downhill to the bottom right hand corner of the field, to a metal gate with WM on a post on the right. Through the gate and turn right onto a good path, downhill to join Huddersfield Road (A640). Cross the road onto Ogden Lane, soon turning right passing the Bulls Head Inn on the left. Follow the road uphill passing old houses on both sides (Lower Ogden). At the top of the hill (Higher Ogden) at the houses turn left. Take the next left turn off the road onto a path which goes downhill, slightly to the right. At the bottom the path joins a wide path, turn right. Keep straight on passing the water treatment plant and Piethorne Reservoir on the left. On reaching a metal gate with a wooden gate on the right, go through. Very soon to reach a wooden gate on the left. Turn left before it, through another wooden gate. Follow the path around the water's edge coming to a stile. Over the stile and turn left, straight on to a metal gate with WM. Through the gate and follow a well-defined path steeply uphill (Tunshill Lane). Eventually the path goes downhill passing a sign post on the right with WM and PW marker, keep straight on. Follow this path for some time passing a post with WM and PW marker.

Just before reaching a path junction there are two alternative routes, with no real difference in distance or time. (a) Look to the left for a gap in the wall, go through to a stile with WM. Over the stile going downhill slightly left to reach stone steps. (b) Carry on to meet the path junction, WM on a post on the left. Turn right through a wooden gate, very soon reaching the stone steps. Turn left over a stile with WM, going downhill towards Rakewood Viaduct in front. On reaching the viaduct go over a stile with WM. Straight on until reaching the first of the rugby pitches and turn right onto a narrow path. This soon meets a wall, turn right and go through a gap in the wall with WM. Here look across the pitches, practically straight in front is a wooden gate near the trees. Cross the pitches and go through the gate, to a metal gate. Go through onto a tarmac road and turn left. Follow the road to the Hollingworth Lake Visitors Centre on the right.

